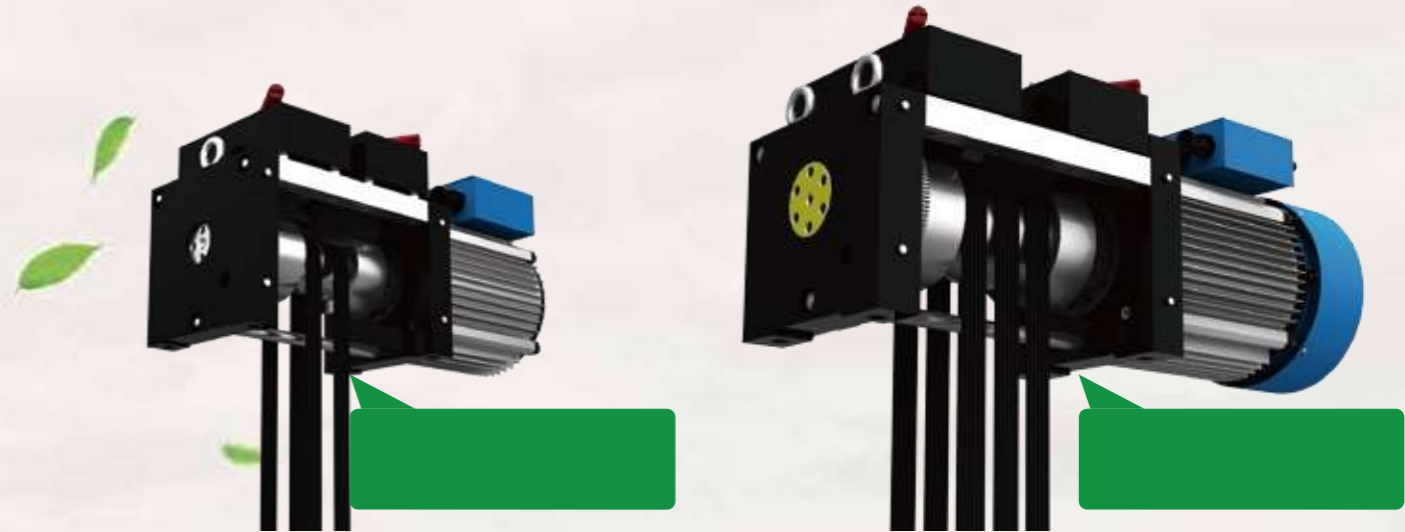


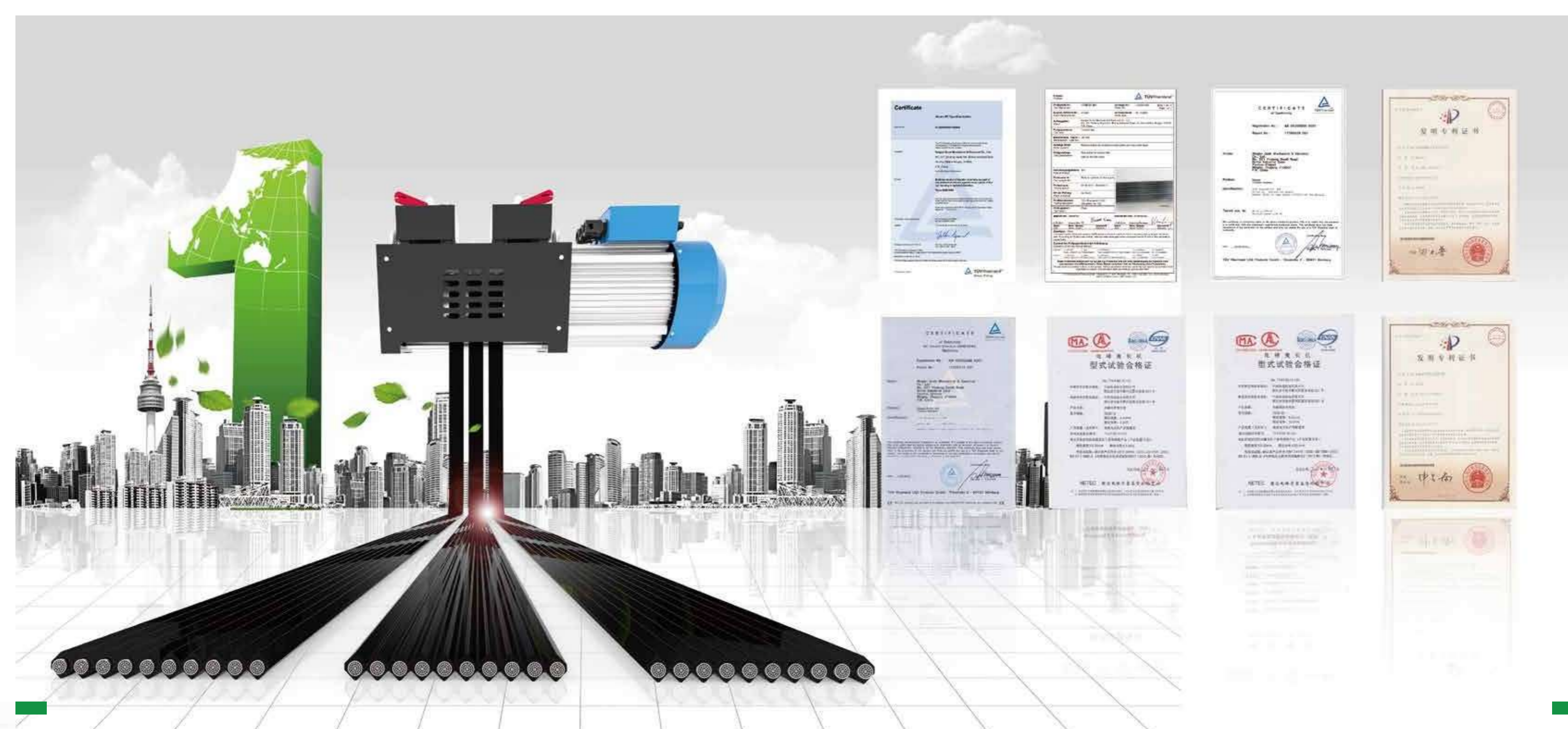


CERTIFICATE





Series Speed Capacity	Home Lift	Passenger Lift		
	0.40 m/s	0.63 m/s	1.00 m/s	2.50 m/s
320 kgs	GDB112 series			
400 kgs				
480 kgs				
630 kgs		GDB132 Series		
800 kgs				
1000 kgs				
1250 kgs				
1600 kgs				
2000 kgs				

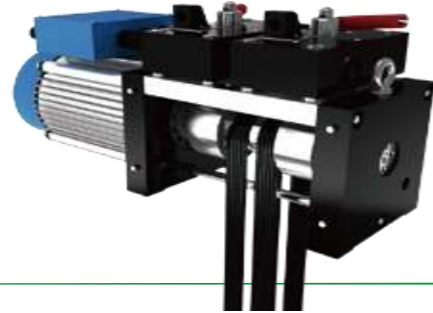




01 Traction Machine **GDB132-1000-20-34-XX**

GDB **132** - **1000** - **20** - **34** - **XX**

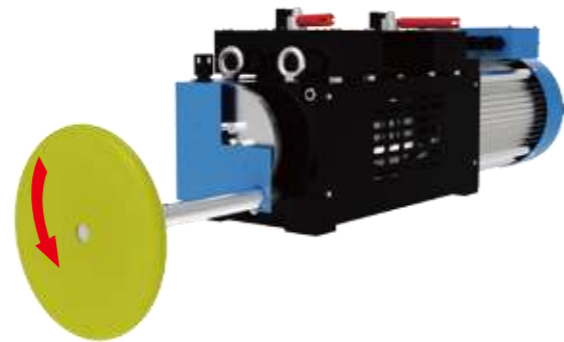
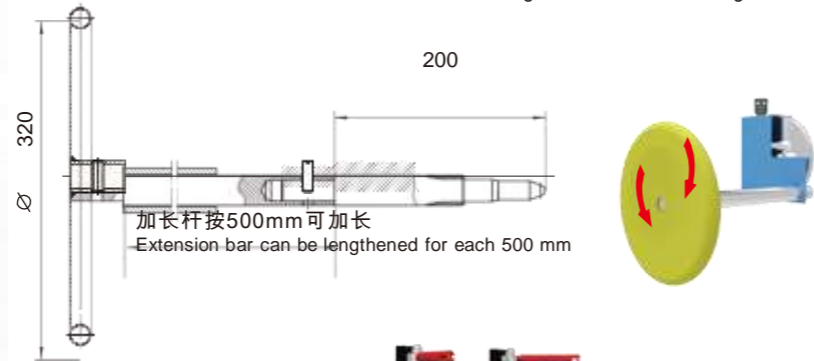
Series No Center Height Loading capacity Speed Voltage Additional code



02 Hand Wheel **XP-H11205**

XP - **H** **112** **05**

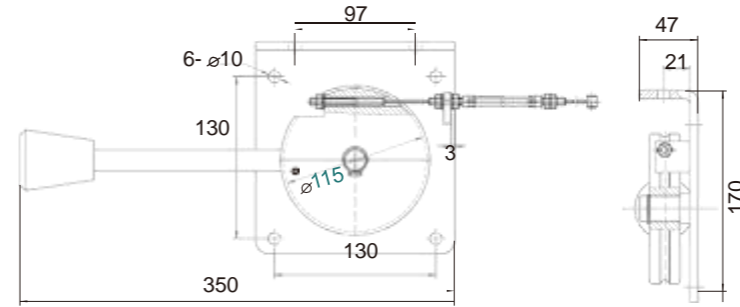
Series No Hand Wheel Center Height Extension Bar Length Code



03 Brake Release **XP-BRB280**

XP - **BR** **B2** **80**

Series No Brake Release Belt Number Wire Length Code

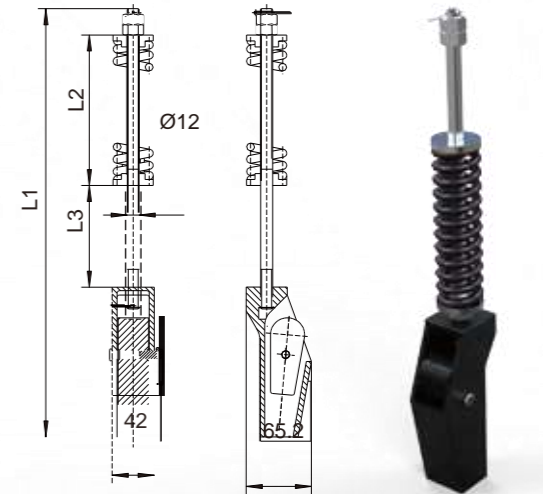


04 Belt Lock **XP-L3012**

XP - **L** **30** **12**

Series No Belt Lock Belt Width Max Hoist Height

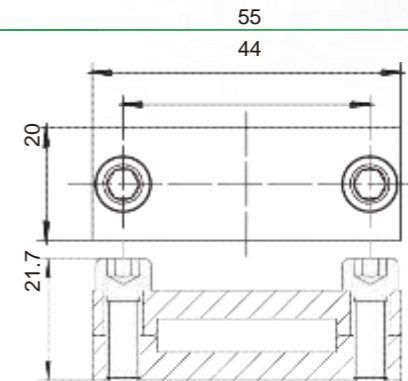
$12m \leq H < 20m$	418	152
$20m \leq H \leq 50m$	468	202



05 Belt Clip **XP-BC30N**

XP - **BC** **30N**

Series No Belt Clip Belt Width



GUDA BELT TRACTION SOLUTION

06 Traction Belt

XP-B30

XP - B 30N
 Series No Traction Belt Center Height

The GDB Flex elevator has been designed to achieve the maximum possible environmental protection, minimizing the consumption of energy and practically reducing the emission of polluting waste to zero.

The GDB uses steel flat ribbons coated with polyurethane instead of traditional steel cables. They are 20% lighter, they last up to three times longer and their great flexibility allows a much smaller radius of curvature, which makes it possible to use a machine with lower nominal power and without gears.

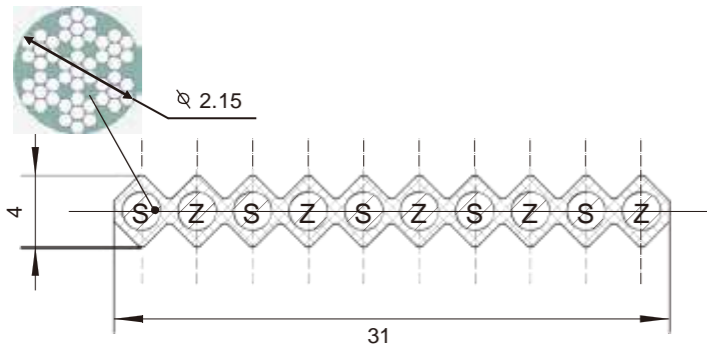
The tapes, unlike the cables, do not need to be lubricated. The compact machine without reducer is equipped with a permanent magnet synchronous motor of radial design. It is up to 50% more efficient from the energy point of view than a machine with conventional reducer



Improvement in structure and re - group



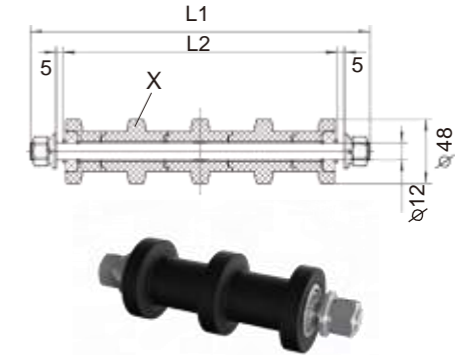
After 10 million times of fatigue strength test, the breaking force with 5% decline than original.



07 Guide Wheel XP-GWB3XX

XP - GW B3 XX
 Series No Guide Wheel Belt Number Special Code

PART NO.	X-	L1	L2
XP-GW B2	2	150	104
XP-GW B3	3	195	149
XP-GW B4	4	240	194
XP-GW B5	5	285	239
XP-GW B6	6	330	284

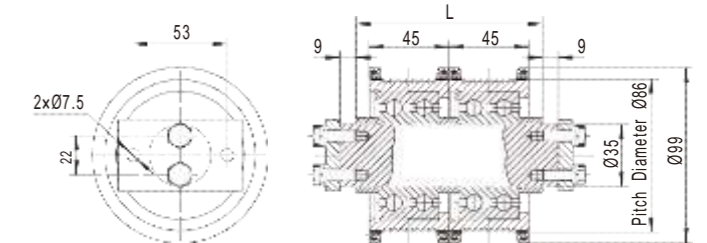


08 Counter Pulley XP-CP99B3XX

XP - CP 99 B3 XX
 Series No Counter Pulley Counter pulley external Dia Belt Number Special Code

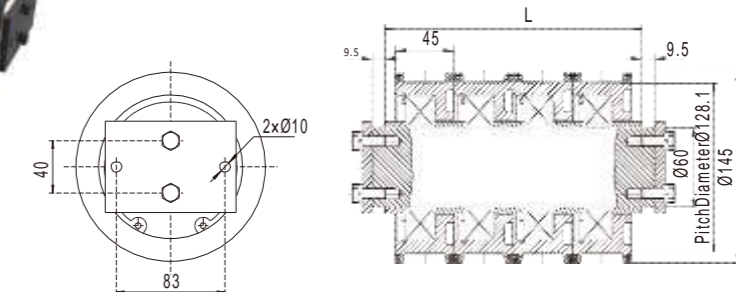
Counter Pulley Set-99 Series

PART NO.	QTY	L
XP-CP 99 B2DB	2	105
XP-CP 99 B3DB	3	150



Counter Pulley Set-145 Series

PART NO.	QTY	L
XP-CP 145 B2	2	106
XP-CP 145 B3	3	151
XP-CP 145 B4	4	196
XP-CP 145 B5	5	241
XP-CP 145 B6	6	286



09 Belt Breaking Detect

XP-D30C2

XP-D

Series No Belt Breaking Detect

30

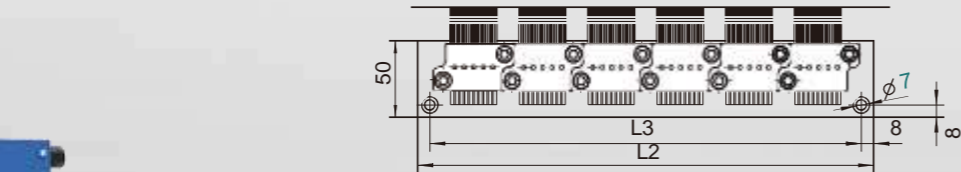
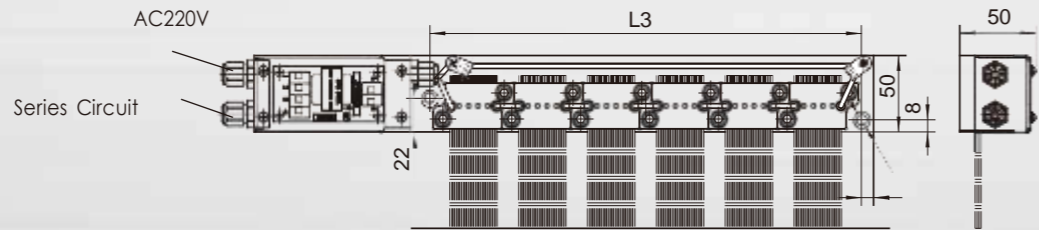
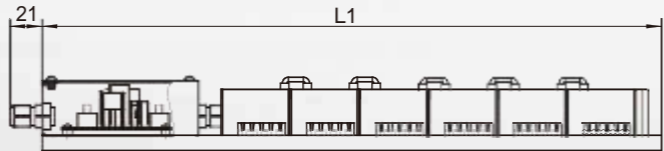
Belt Width

C

Short circuit blade+ test blade+junction box

2

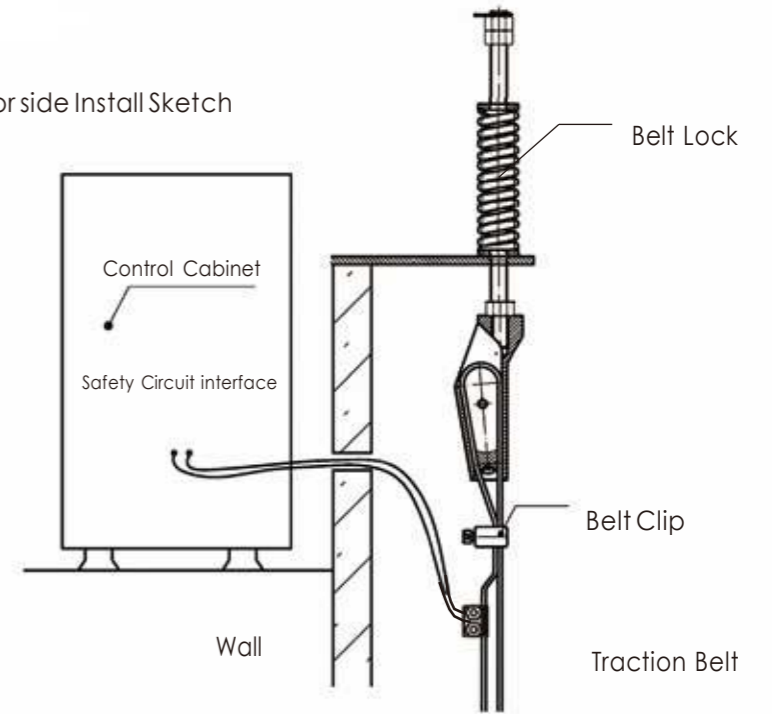
Belt Number



PART NO.	QTY	L1	L2	L3
XP-D 30 C2	2	225	118	102
XP-D 30 C3	3	270	163	147
XP-D 30 C4	4	315	208	192
XP-D 30 C5	5	360	253	237
XP-D 30 C6	6	405	298	282



Wire Monitor side Install Sketch



Short Circuit Side Install Sketch

